

# Compact Valve Automation

- **STAINLES CAPTIVE COVER BOLTS**

- **STAINLESS MANUAL OVERRIDES AND OUTPUT SHAFTS**

**EV SERIES**

- **THE EV SERIES HAS A NEMA 4, 4X DESIGN HOUSING**

- **POTTED LEADS**

Optional sealed leads prevents moisture ingress from conduit runs.

- **The XV Series also has an optional NEMA 4,4x only cover - The NV Series.**

- **BALL BEARING RELIABILITY**

Ball bearings on both the upper and lower rotor shaft provide greater reliability.

- **HEAVY DUTY PSC MOTORS**

- **CAMS ALLOW 90°-270° ROTATION**

- **HIGH STRENGTH ALLOY STEEL GEARS**

- **15amp SPDT SWITCHES**

- **ISO 5211 MOUNTING PAD F03-F07**

- **THERMALLY BONDED POLYESTER COATING**

- **THE XV SERIES HAS A NEMA 4, 4X,7,9 DESIGN HOUSING**

- **Ideal for ball valve automation.**

Paired with your favorite ball valve, the EV Series is a perfect replacement for most solenoid valve applications that require more flow.

- **Modulating Control with Digital Calibration**

4-20mA, 0-10Vdc input allows complete control over valve position. Push Button setup is digitally stored.



- **Extra Switches**

Field switch kits available.

- **Position Indicator**

Visual indication of valve position.

- **Heater and Thermostat**

Prevents condensation buildup and corrosion.



- **Optional Motors**

115Vac, 230Vac  
12, 24, 90Vdc  
24Vac

- **Heavy Duty Brake**

For rubberlined and other springback valves.

- **Relays, feedback sensors,...**

Consult factory for custom electrical requirements.

**Compact - Reliable:**



- **ISO Mounting**  
ISO direct coupled mounting allows for smaller package height.

**Options:**

# Compact Valve Automation

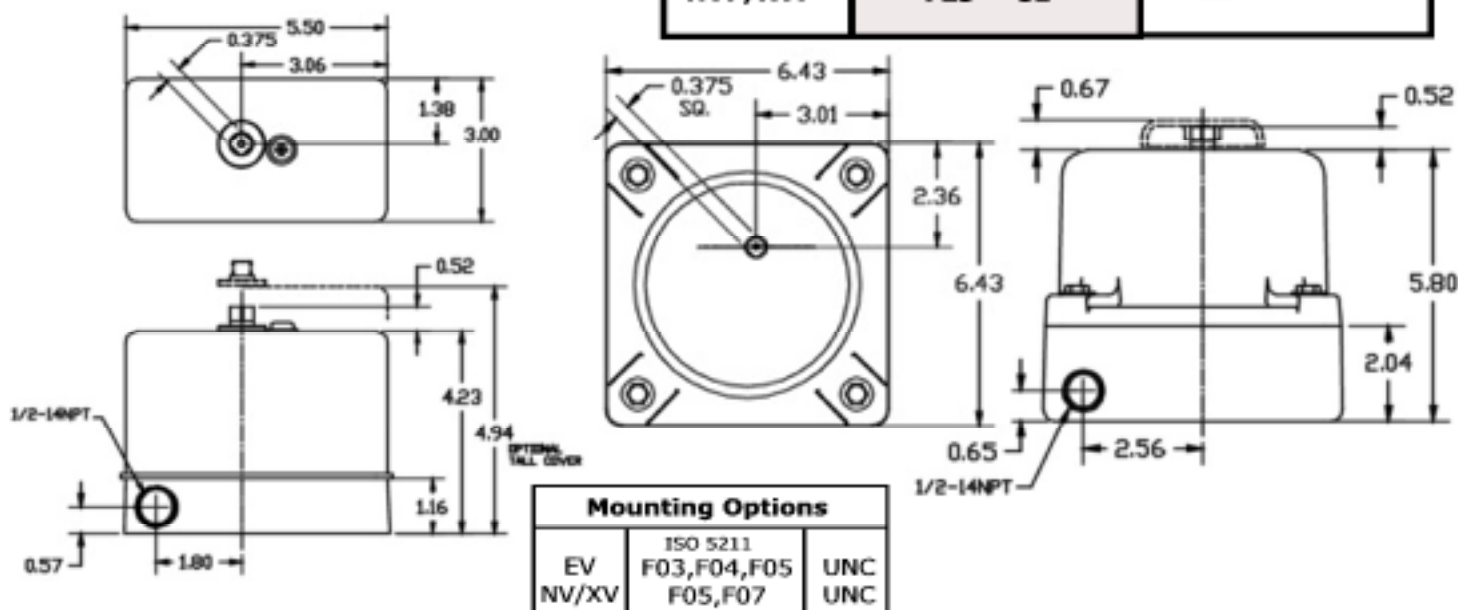
**Performance:**

Model	Output Torque		Speed Sec/90°	
	in-lbs	N-m	115Vac	12Vdc
EV1	125	14	3	3
EV3	300	34	7	6

Many other speeds and voltages are available. Please consult the factory.

Model	Output Torque		Speed Sec/90°	
	in-lbs	N-m	115Vac	12Vdc
NV3/XV3	350	40	7	6
NV4/XV4	475	54	10	9
NV6/XV6	625	71	9	8
NV7/XV7	725	82	10	9

**Dimensions:**



**Options:**



● **Position Indicator**

Visual indication of valve position. The extra thick polycarbonate indicator is also UV stabilized.

● **Battery Backup**

A separate enclosure containing an uninterruptable power supply. Drives actuator full open/close in case of power loss to unit. Will monitor one or several units at a time.

● **Control Boxes**

NEMA 4, NEMA 7 and non-metallic control boxes for on/off, remote control, "jogging" and other specific and custom wired functions. Consult factory.

● **Potted and Sealed Leads**

Potting and sealing the electrical leads of the actuator helps to prevent moisture ingress through the conduit entry.



While the information contained in this literature is believed to be accurate it is supplied for informative purposes only and should not be considered certified or as a guarantee of satisfactory results by reliance thereon. Nothing contained herein is to be construed as a warranty or guarantee, express or implied, regarding any matter with respect to this product. Products may differ as the result of Valvsys, LLC policy of continuous product improvement.



www.valvsys.com  
info@valvsys.com

**Valvsys, LLC**  
421 Breaden Dr, #15  
Monroe, OH 45050  
ph 513.539.1234  
fax 513.539.2176